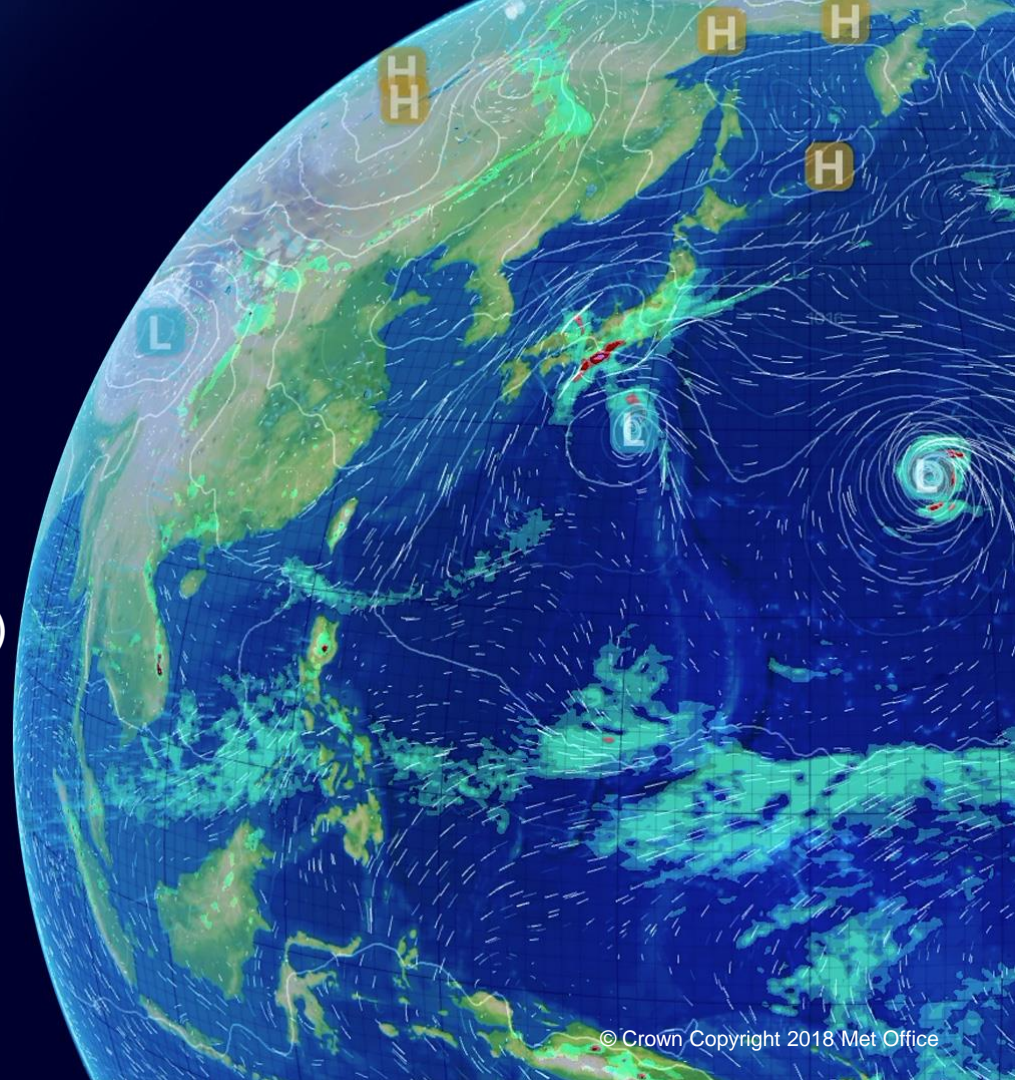


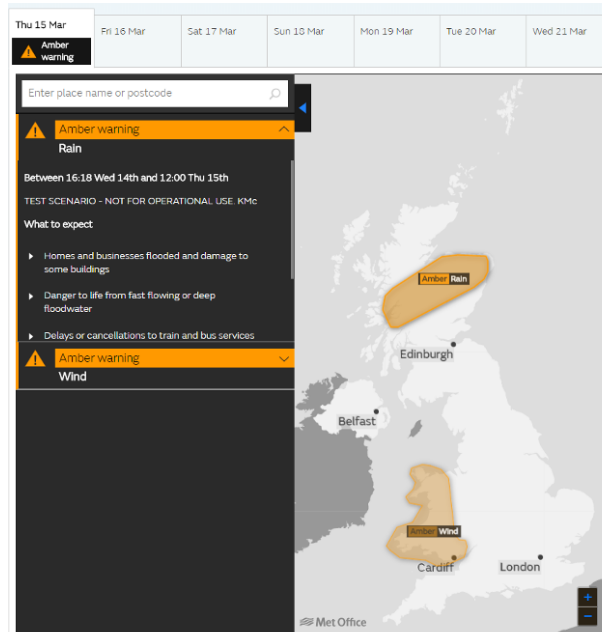
Weather Warnings

Malcolm Weatherall

Met Office Advisor (Civil Contingencies)



What do weather warnings mean?



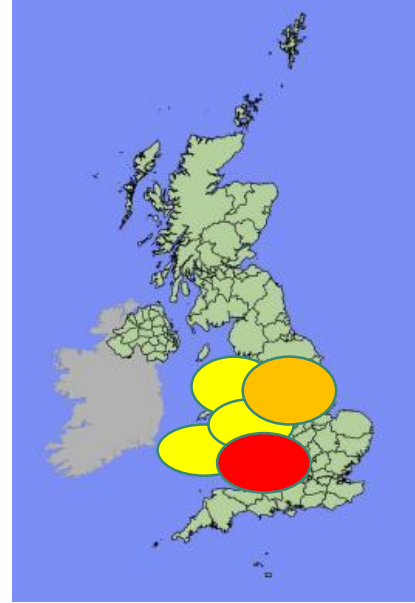
The screenshot displays the Met Office website interface. At the top, a navigation bar shows dates from Thursday 15th March to Wednesday 21st March. A search bar is present with the placeholder text "Enter place name or postcode". Below the search bar, a dropdown menu is open, showing two active weather warnings:

- Amber warning** for **Rain**, with details: "Between 16:18 Wed 14th and 12:00 Thu 15th", "TEST SCENARIO - NOT FOR OPERATIONAL USE. KMc", and "What to expect" including:
 - Homes and businesses flooded and damage to some buildings
 - Danger to life from fast flowing or deep floodwater
 - Delays or cancellations to train and bus services
- Amber warning** for **Wind**

To the right of the text is a map of the United Kingdom with orange shaded areas indicating the warning regions. One area covers the Scottish Highlands, labeled "Amber Rain", and another covers the south and west of England, labeled "Amber Wind". Major cities like Belfast, Edinburgh, Cardiff, and London are marked on the map. The Met Office logo is visible in the bottom left corner of the map area.

Dealing with uncertainty- why we don't get yes/no answers

- Forecast run every 6 hours
- Variations may include
- Position of weather feature
- Intensity of weather feature
- Timing of weather feature





Impact Matrix

Likelihood and Impact are plotted onto a Weather Impact Matrix

Likelihood of IMPACTS occurring VERY LOW DOES NOT MEAN "NO"

Likelihood	High	Green	Yellow	Orange	Red
	Medium	Green	Yellow	Orange	Orange
	Low	Green	Green	Yellow	Orange
	Very low	Green	Green	Yellow	Yellow
		Very low	Low	Medium	High
	Impact				

Level of impacts Expected-HOW BAD COULD IT BE

Plotting the Likelihood against the Impact allocates the warning a colour. The location of the tick in the box is the important element NOT the colour!



Updates to warnings- Matrix can be updated

Examples of impacts

Low

Short lived disruption to day to day activities

Snow- Road network slow for a time

High

Prolonged disruption

Snow- road closures and large number of stranded motorists





Understanding Weather Warnings

Medium Impact Warning

Injuries with danger to life

Disruption to day to day routines and activities.

Short-term strain on emergency responder organisations.

Transport routes and travel services affected. Longer journey times expected. Some vehicles and passengers stranded.

Disruption to some utilities and services.

Damage to buildings and property.

Likelihood	High			✓	
	Medium			✓	
	Low			✓	
	Very low			✓	
		Very low	Low	Medium	High
Impact					



Understanding Weather Warnings

High Impact Warning

Danger to life

Prolonged disruption to day to day routines and activities

Prolonged strain on emergency responders organisations.

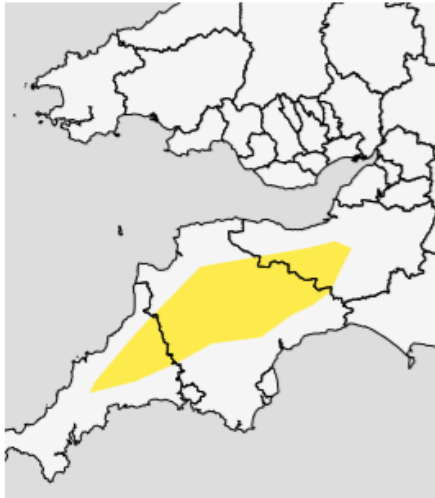
Transport routes and travel services affected for a prolonged period. Long travel delays. Vehicles and passengers stranded for long periods.

Disruption to utilities and services for a prolonged period.

Extensive damage to buildings and property.

Likelihood	High	Green	Yellow	Orange	Red ✓
	Medium	Green	Yellow	Orange	Red ✓
	Low	Green	Green	Yellow	Orange ✓
	Very low	Green	Green	Yellow	Yellow ✓
		Very low	Low	Medium	High
Impact					

 **Yellow warning
Rain** **Between
14:00 Fri 13 Apr 2018 and
21:00 Fri 13 Apr 2018**



Heavy showers may form during Friday afternoon.

What to expect

- There is a small chance that homes and businesses could be flooded, causing damage to some buildings
- Spray and flooding could lead to difficult driving conditions and some road closures
- Where flooding occurs, delays or cancellations to train and bus services are possible

Further details

Whilst many parts of southwest England will see a dry day as conditions brighten up through Friday some heavy showers may form.

Where these do develop some large rainfall totals may fall in a short space of time with 40 mm of rain possible in 2 hours very locally. However, even a short distance away only very small rainfall amounts are expected.



What to expect- language will reflect the uncertainty- Higher likelihood uses “Homes and businesses likely to be flooded.....”

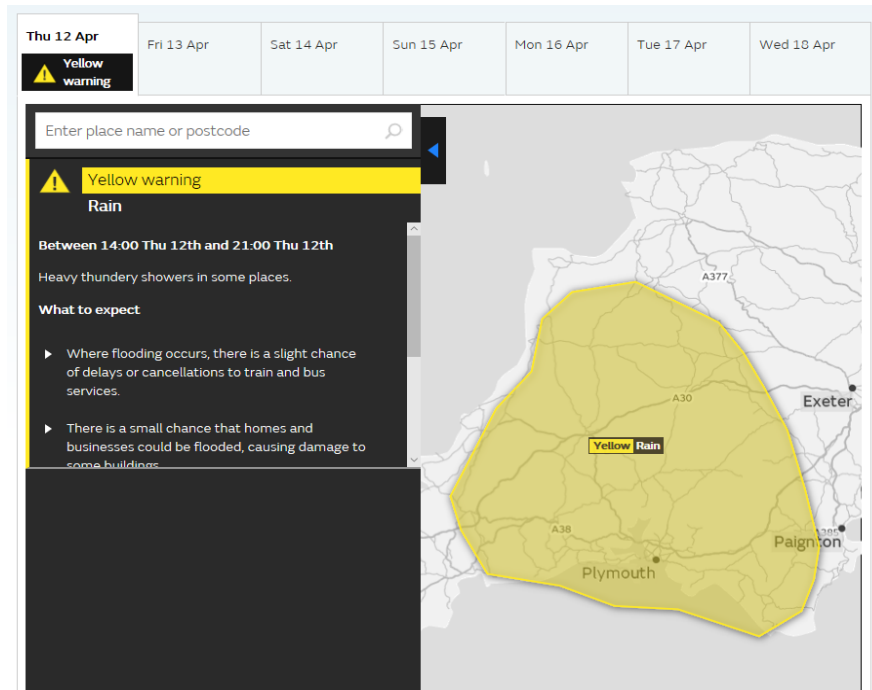
Where do I find weather warnings?

- Met Office web site
- Met Office App
- By email



Get updates

- Email alerts
- RSS



The screenshot shows the Met Office website interface for a weather warning. At the top, a navigation bar displays dates from Thursday 12th April to Wednesday 18th April. A 'Yellow warning' banner is visible. Below this, a search bar prompts the user to 'Enter place name or postcode'. A detailed warning for 'Rain' is shown, effective between 14:00 and 21:00 on Thursday 12th. The warning text states: 'Heavy thundery showers in some places. What to expect: Where flooding occurs, there is a slight chance of delays or cancellations to train and bus services. There is a small chance that homes and businesses could be flooded, causing damage to some buildings.' To the right, a map of the Plymouth region is shown with a yellow shaded area indicating the 'Yellow Rain' warning zone, covering areas around Plymouth, Paignton, and Exeter.

Summary

Check the matrix-where's the tick?

Check the forecast- additional information

Local knowledge

Do you need to take action?

Keep an eye open for updates to warnings