

4. COMMUNITY CASE STUDY

- WIVELISCOMBE EMERGENCY PLAN**

WIVELISCOMBE TOWN COUNCIL



WHERE IS WIVELISCOMBE?



WIVELISCOMBE TOWN COUNCIL



KNOWN AS 'WIVEY'

- Population about 3,400
- Steady flow of new housing
- Secondary school being rebuilt/ enlarged
- 2 FREE car parks
- Shopping centre for local surrounding villages
- Primary school/ surgery/ chemist + lots of specialist shops
- Lots of businesses based in the town
- Fantastic recreation ground [including heated open air swimming pool] – sadly, now closed until March, 22.

WIVELISCOMBE TOWN COUNCIL





WIVELISCOMBE TOWN COUNCIL



Town Council = 18 members

- Emergency planning Group = 4 members
- Experience – Fire & Ambulance Service/ Chief Executive of District Council/ Headmaster Secondary School

WIVELISCOMBE TOWN COUNCIL



HOW DID WE START OUR PLAN?

WIVELISCOMBE TOWN COUNCIL
Contingency/Emergency Plan

		Page
1.	Introduction	2
2.	Definition of emergency	2
3-5.	Aim and Objectives of the Plan	2
6-7.	Types of Emergencies	2
8-9.	Town Emergency Response Team	3
10-14.	Activating the Emergency Plan	4
15.	Emergency Control Centre (ECC)	4
16-17.	Incident handling	4
18-21.	Evacuations	5
22.	End of Emergency	5
23.	Plan Review and Practice	6
24-27.	Distribution of the Emergency Plan	6
Appendix	1	Town Councillor Details
Appendix	2	Emergency Action Log
Appendix	3	Emergency Box (Two) Contents
Appendix	4	Parish Shelter register sheets
Appendix	5	Shop detail information request forms
Appendix	6	Parish Shelter information request forms
Appendix	7	Organisations list
Appendix	8	Volunteer forms
Appendix	9	
Appendix	10	Shop detail (A) Confidential
		Parish Shelter details (B) Confidential
		Volunteer details (C) Confidential

WIVELISCOMBE TOWN COUNCIL



HOW DID WE DEVELOP OUR PLAN?

Communities Prepared
Template Version 1.0

Community Name: **WIVELISCOMBE TOWN COUNCIL**

Community Emergency Plan

Activation First Steps Action Card available on the reverse

Ownership Emergency plan sub-committee

Address c/o Town Clerk, 35 Sir Gilbert Scott Court, Long Street, Williton, Somerset

Post Code	TA4 4RH	Borough / District	Somerset West & Taunton
------------------	---------	---------------------------	-------------------------

Issue Date 01.10.21 **Update Due** 01.01.22 **Version** 7

Contents

Contact Details	3
Resources & Skills.....	4
Shelter.....	5
Local Hazards & Risk	6
Community Mapping	8
Volunteer Action Card	9
Health and Safety Aide Memoir.....	11

Plan Aim

WIVELISCOMBE TOWN COUNCIL



HOW DID WE SUPPORT OUR PLAN?

- We developed 2 Emergency boxes
- We sourced 4 flood boxes
- Everything stored in a central location – access by key held by all Emergency group members + key personnel in Town

WHAT RESOURCES DO WE HAVE?

- EMERGENCY BOX X 2



WIVELISCOMBE TOWN COUNCIL



WHAT'S IN THE EMERGENCY BOX?

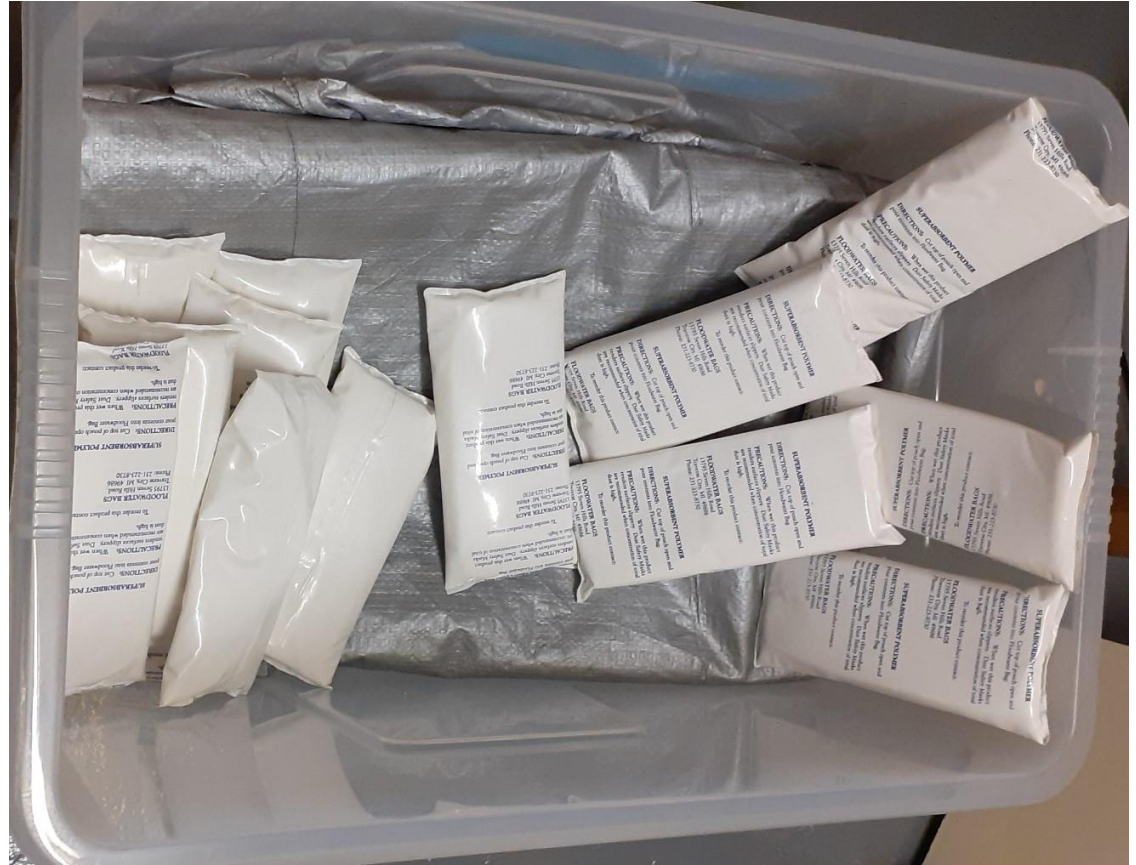
- FOIL BLANKETS X 100
- HI-VIS JACKETS X 5
- FIRST AID KIT
- BOX OF MEDICAL GLOVES
- WET WIPES & TISSUES
- WIND UP TORCHES X 2
- LED LIGHT
- LIGHT STICKS X 10
- HANDHELD RADIO X 2

WIVELISCOMBE TOWN COUNCIL



AND THE FLOOD PACKS

- FLOOD KIT X 4



WIVELISCOMBE TOWN COUNCIL



WHAT DO WE WANT TO ACHIEVE?

- A safe place for displaced community
- Identify resources within our community
- Contact details – working hours/ out of hours
- How to contact outside resources
- Establish a centre to co-ordinate activities
- Identify potential incidents

WHO DO WE CONTACT LOCALLY?

- Churches
- Schools
- Sports Club/ Community Facilities
- Shops
- Take-aways
- Restaurants/ Cafes
- Pharmacy/ Doctors' surgery



WHICH ORGANISATIONS ARE WE IN CONTACT WITH?

- Avon & Somerset Constabulary
- Devon & Somerset Fire & Rescue
- South Western Ambulance Service NHS [Foundation] Trust
- Somerset Local Authorities Civil Contingencies
- NHS Somerset



RESULT OF [RECENT] STORM EUNICE

- There were widespread power outages following the storm.
- There was a lack of awareness on the part of SOMERSET COUNTY COUNCIL of our plan and our capabilities
- As a result of the power outage, our local fire station was opened up as a drop-in centre.
- We contacted the Fire Service and Somerset County Council representatives to make them aware of our plan - but by then, it was too late to involve our Emergency Planning Group



HOW CAN WE TEST WHETHER OUR PLAN WORKS?

- **Answer – Table top exercise!**

TABLE TOP EXERCISE!

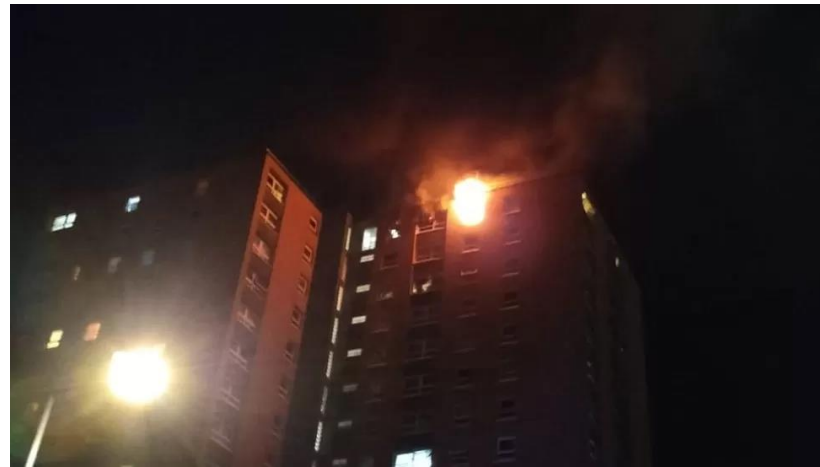
- Scenario: There is a fire and gas leak at flats in Wiveliscombe.
- FIRE SERVICE & POLICE are on scene and arranging evacuation of premises.
- It has been declared a 'MAJOR INCIDENT'.
- Fire Service advise there are 24 flats and possibly up to 3 people in each flat.

WIVELISCOMBE TOWN COUNCIL



FIRE IN BRISTOL – 1 week after our Exercise

- 90 residents were evacuated
- Rest centre established in local Church
- City Council providing welfare for 40 people



WIVELISCOMBE TOWN COUNCIL



WHAT DID WE LEARN FROM OUR EXERCISE?

- Additional resources might be required if any evacuees infirm/require constant care/support
- Useful for us to be identifiable so wear branded high-viz jackets
- Additional contact details required for support for catering at evacuation facility
- Social media and 10 RADIO has not been considered – but realise important!
- Need additional Councillors to support activities
- Our Emergency plan is robust and supports the Town's needs!



ANY QUESTIONS?



WIVELISCOMBE TOWN COUNCIL

